

Illuminazione LED Lineare



LED LINEAR LIGHTS

V-TAC LED Linear Lights are an energy efficient, low maintenance alternative to traditional linear fluorescent in a variety of industrial, commercial, and light assembly applications. It is the optimal solution for conventional lighting systems and excellent for new installations due to its low installation cost.

KEY FEATURES

- Saves 80% energy
- No Ultraviolet or Infrared Rays
- Totally flexible, Compact & Adjustable design
- No Lead or Mercury content hence environment friendly
- Provides Uniform Radiance & Enhances appeal of any environment
- Continuous row modular system

APPLICATION

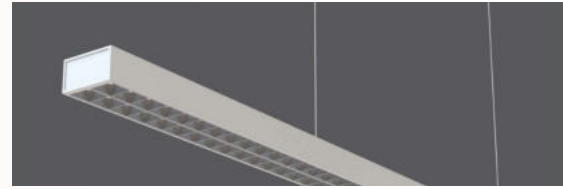
Ideal for lighting applications in residential, commercial, and hospitality locations.



COMPLETE RANGE OF LINEAR LIGHTS

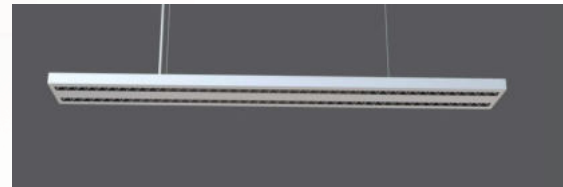
Up & Down Linear Lights (Non-Linkable)

One (1) metre stand-alone suspended up & down lighting with cutting-edge reflectors for a soft yet sufficient lighting effect; available in Silver & White



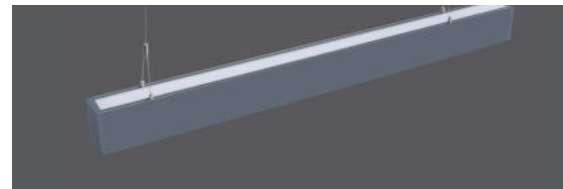
Up & Down Linear Hanging Lights

Continuous suspended upward & downward lighting with a broad 160mm width for a wider scope; modern tech reflectors to distribute just the right amount of light; available in Silver & White



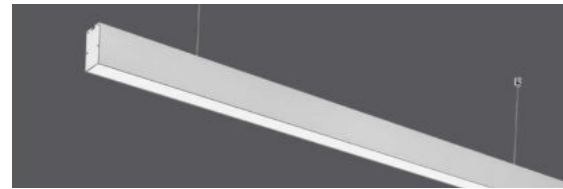
Up & Down Linear Hanging Lights (Slim)

Continuous suspended up & down lighting with a 75mm body; available in Black, Silver, and White



Linear Hanging Lights (Non-Dimmable)

Continuous suspended downward lighting with a narrow 35mm body for a leaner scope; competitively priced for professional task lighting in commercial areas; available in Black, Silver, & White



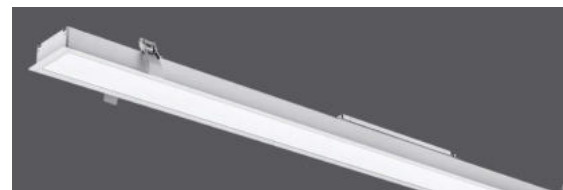
Linear Hanging Lights (Dimmable)

Dimmable suspended downward lighting with a 50mm body for narrower aisles; continuous up to 12m; available in Silver & White



LED Recessed Linear (Linkable)

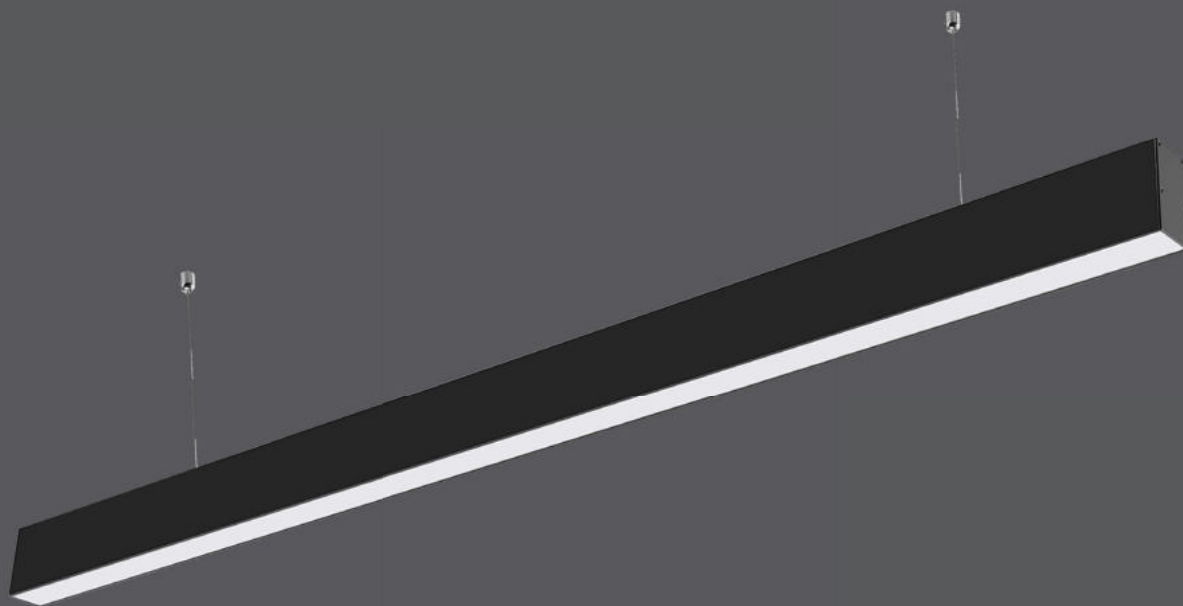
Recessed version of our continuous downward linear lighting with a 70mm body; available in Silver & White



LED Recessed Linear (Linkable)

A broader version of our recessed linear lighting at 90mm width; continuous up to 12 metres; available in White





EASY TOGGLE SWITCH



3000K 4000K 6400K

EASY ACCESS FOR
COLOR CHANGING
WITH BUTTON



COLOR
CHANGING

LINEAR 3INI LIGHTS

Discover V-TAC's reliable 40w suspended linear lights with a staggering lifespan of 30,000 hours. Designed with toggle switch, 3INI color changing light. Perfect replacement for traditional and inefficient linear lighting fixtures with the efficient LED provided by Samsung.

- 30,000 hrs Lifespan
- AC:200-240V,50/60Hz
- Toggle switch - 3INI CCT
- Aluminum Body
- 1.5 Meter Wire Length

5 YEAR
WARRANTY*

BLACK VT-7-44

SKU:20060 | 3INI



WATTS	LUMENS	SIZE	BOX QTY.
40w	3200	1200x35x67mm	12 pcs



LED LINEAR LIGHTS

*Suitable for 10-12 hours daily, usage of the product for 24 hours a day would void warranty

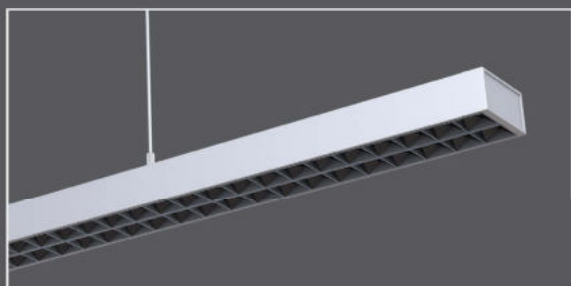
www.v-tac.eu | www.vtacexports.com



LED LINEAR LIGHTS



1-10V
DIMMABLE



LINEAR HANGING LIGHTS-NON LINKABLE

This modern range of suspended linear lights has up & down illumination for a more evenly distributed light that creates a subtle ambient yet sufficient lighting for any commercial lighting. Linear up & down lights are offered in two colors variants Silver and White.

SILVER **VT-7-61-S**

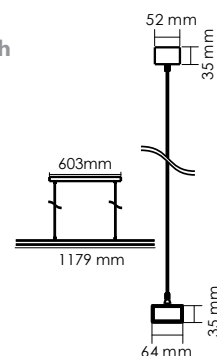
SKU:607 | 4000K DAY WHITE

WHITE **VT-7-61-W**

SKU:606 | 4000K DAY WHITE

- **30,000 hrs Lifespan**
- **AC: 100-240V, 50Hz**
- **Aluminum Body**
- **UGR<6**
- **1-10V Dimmable**
- **1.5 Meter Wire Length**

5 **YEAR**
WARRANTY*



WATTS

UP 30w

DOWN 30w

LUMENS

UP-3300

DOWN-3300

SIZE

1179x64x35mm

BOX QTY.

8 pcs

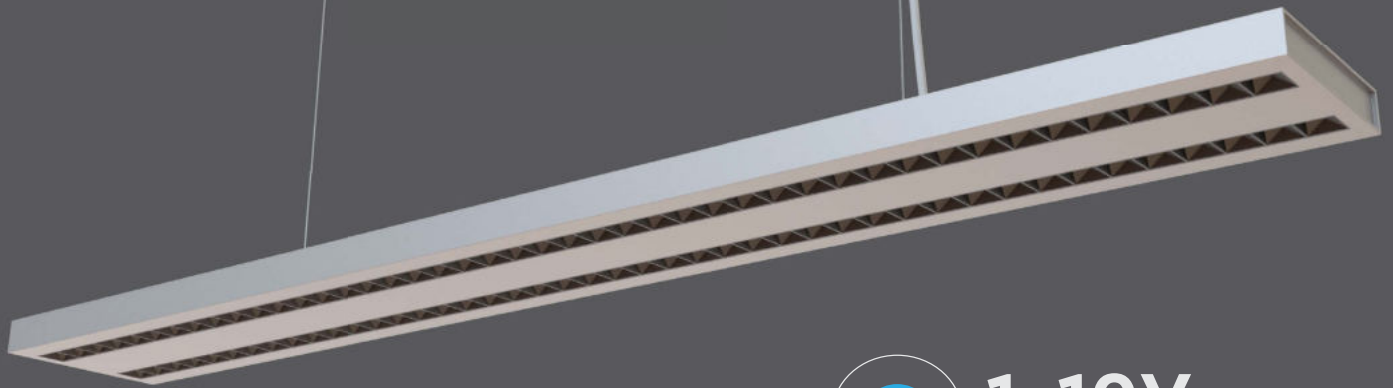
LED LINEAR LIGHTS

*Suitable for 10-12 hours daily, usage of the product for 24 hours a day would void warranty

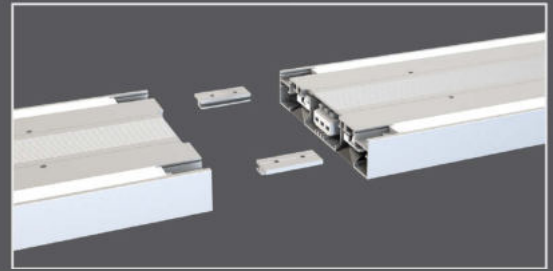
www.v-tac.eu | www.vtacexports.com



LED LINEAR LIGHTS



1-10V
DIMMABLE



LINEAR HANGING LIGHTS

This modern range of suspended linear lights has up & down illumination for a more evenly distributed light that creates a subtle ambient yet sufficient lighting for any commercial lighting. Linear up & down lights are offered in two colors variants Silver and White.

SILVER VT-7-62-S

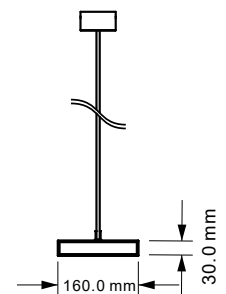
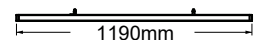
SKU:609 | 4000K DAY WHITE

WHITE VT-7-62-W

SKU:608 | 4000K DAY WHITE

- **30,000 hrs Lifespan**
- **AC:100-240V,50/60Hz**
- **Aluminum Body**
- **UGR<6**
- **Linkable with connectors**
- **I-10V Dimmable**

5 YEAR
WARRANTY*



WATTS
UP 30w
DOWN 30w

LUMENS
UP-3300
DOWN-3300

SIZE
1190x160x30mm

BOX QTY.
4 pcs

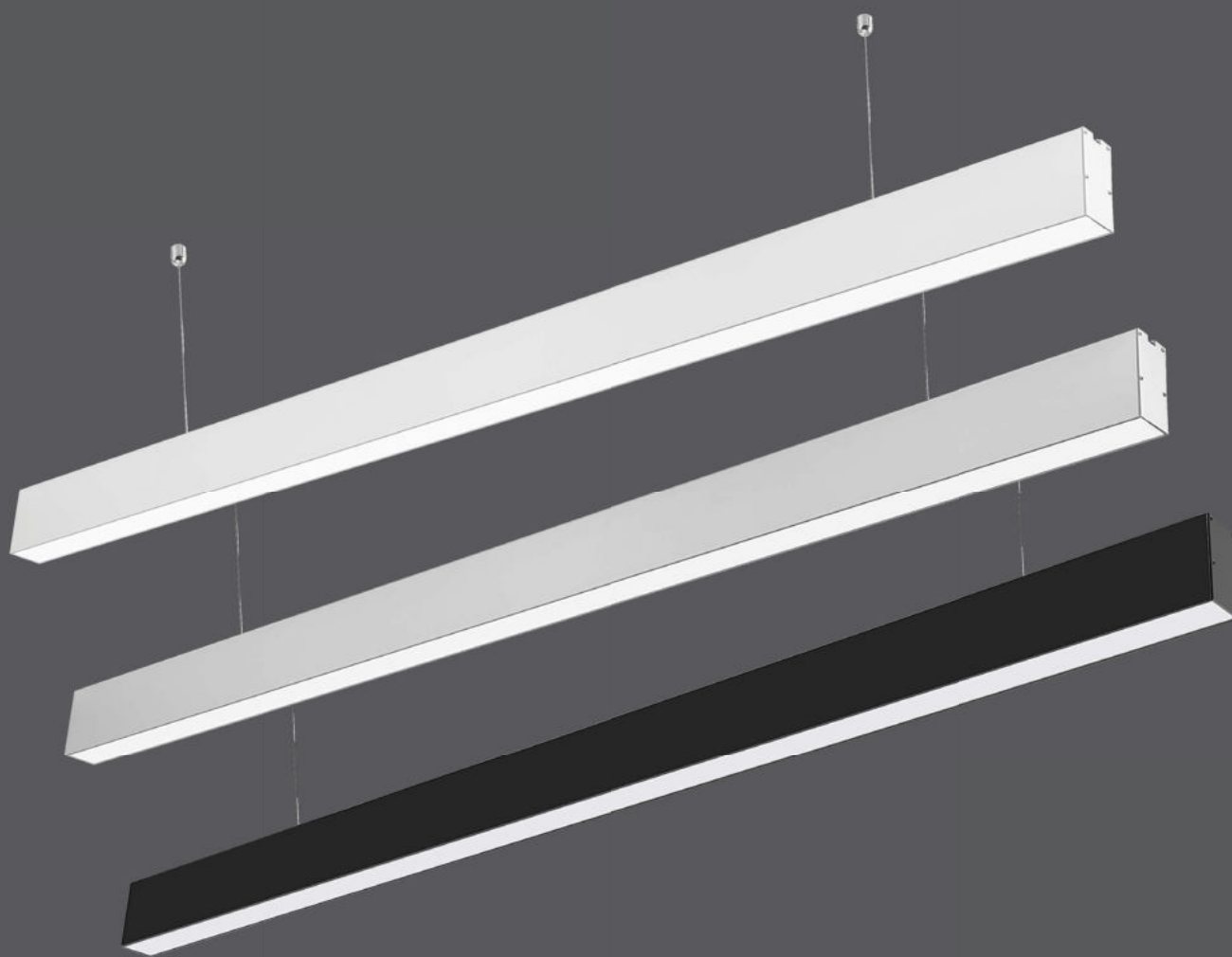
LED LINEAR LIGHTS

*Suitable for 10-12 hours daily, usage of the product for 24 hours a day would void warranty

www.v-tac.eu | www.vtacexports.com



LED LINEAR LIGHTS



LINEAR HANGING LIGHTS

Discover V-TAC's reliable 40w suspended linear lights with a staggering lifespan of 30,000 hours. Designed with excellent heat dissipation. Perfect replacement for traditional and inefficient linear lighting fixtures with the efficient LED provided by Samsung. Linear lights are offered in three colors variants Black, Silver and White.

- **30,000 hrs Lifespan**
- **AC:200-240V,50/60Hz**
- **1.5 Meter Wire Length**
- **Aluminum Body**

5 YEAR
WARRANTY*

BLACK VT-7-40-B

SKU:882 | 3000K WARM WHITE
SKU:374 | 4000K DAY WHITE
SKU:600 | 6000K WHITE

SILVER VT-7-40-S

SKU:375 | 4000K DAY WHITE
SKU:601 | 6000K WHITE

WHITE VT-7-40-W

SKU:376 | 4000K DAY WHITE
SKU:602 | 6000K WHITE

WATTS

40w

LUMENS

3200

SIZE

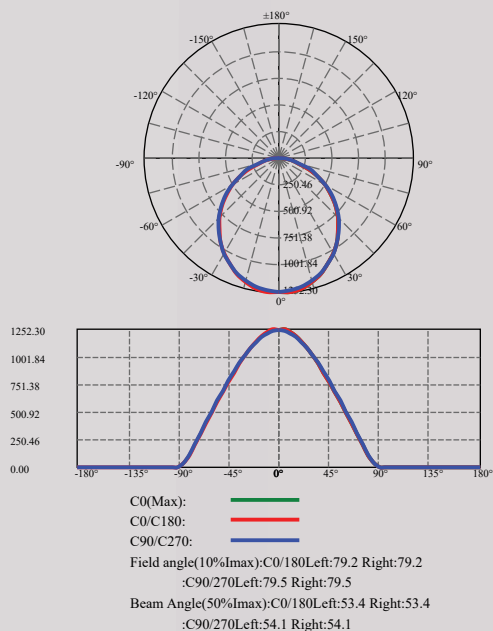
1200x35x67mm



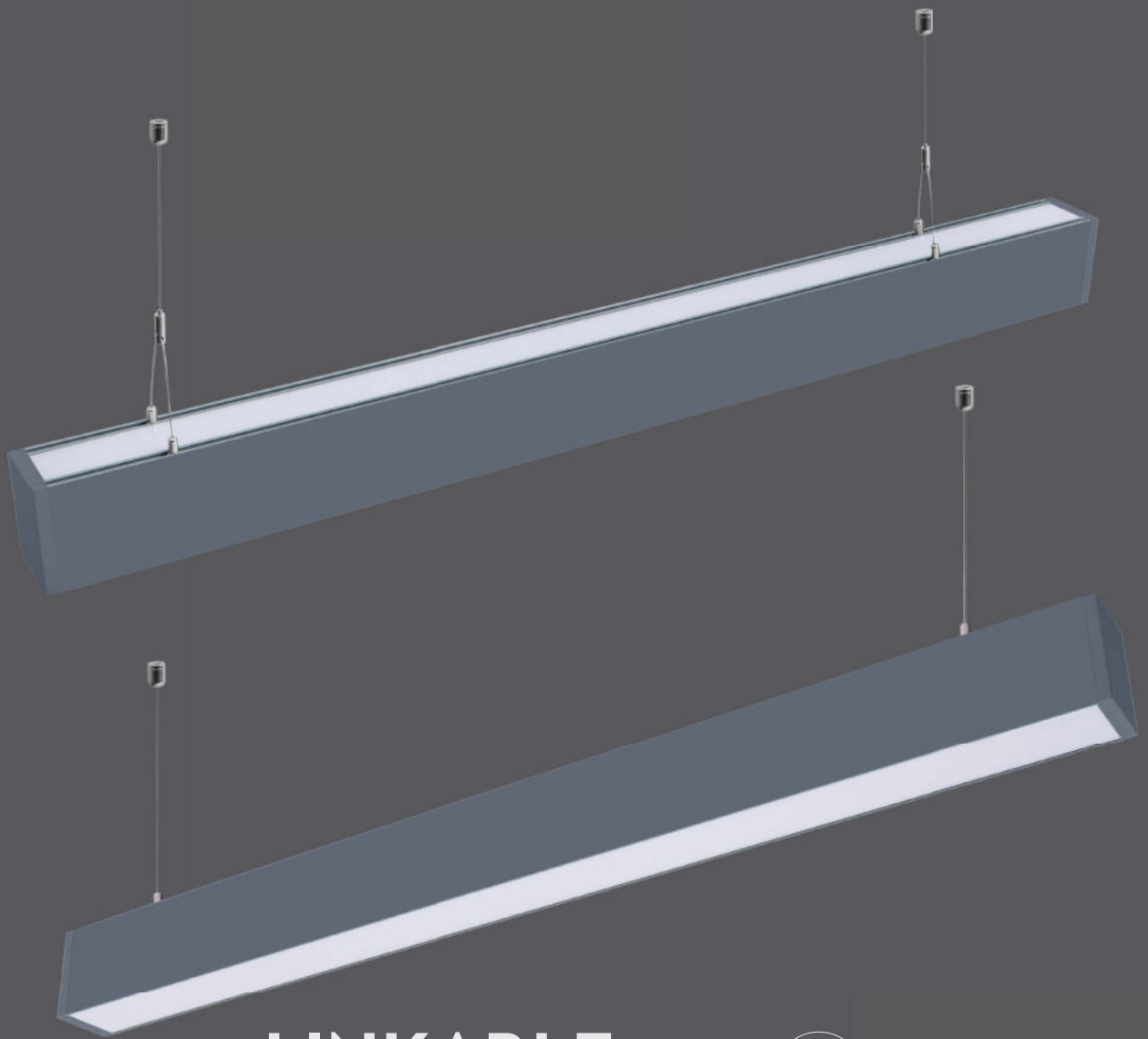
LED LINEAR LIGHTS

*Suitable for 10-12 hours daily, usage of the product for 24 hours a day would void warranty

www.v-tac.eu | www.vtacexports.com



LED LINEAR LIGHTS



LINKABLE
Up to 12 Meters Together



0-10V
DIMMABLE

LINEAR HANGING UP-DOWN LIGHTS

This modern range of suspended linear lights has up & down illumination for a more evenly distributed light that creates a subtle ambient yet sufficient lighting for any commercial lighting. Linear up & down lights are offered in three colors variants Black, Silver and White.

- **30,000 hrs Lifespan**
- **AC:200-240V,50/60Hz**
- **Aluminum Body**
- **Linkable with connectors**
- **0-10V Dimmable**
- **1.5 Meter Wire Length**

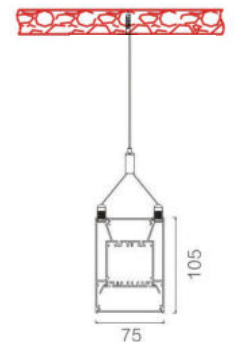
BLACK **VT-7-60-B**
SKU:379 | 4000K DAY WHITE

SILVER **VT-7-60-S**
SKU:378 | 4000K DAY WHITE

WHITE **VT-7-60-W**
SKU:377 | 4000K DAY WHITE

WATTS	LUMENS
UP 20w	UP-2000
DOWN 40w	DOWN-4000

SIZE
1200x75x105mm

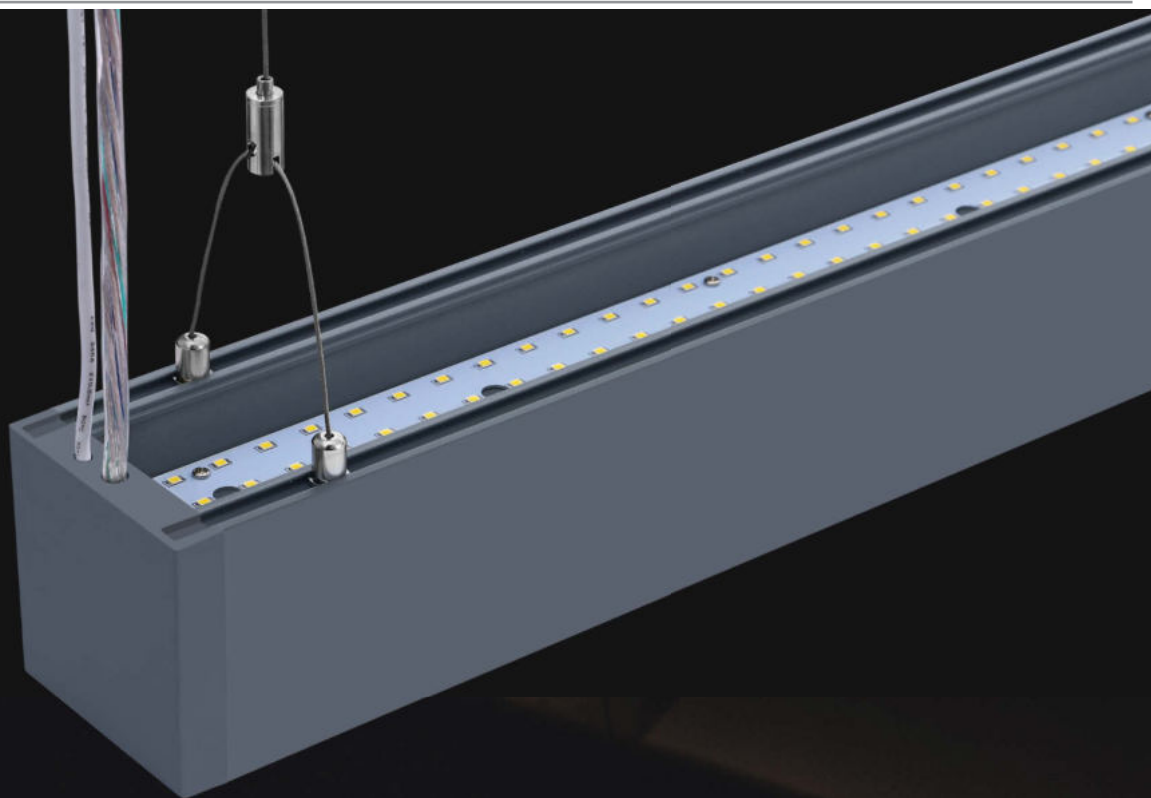
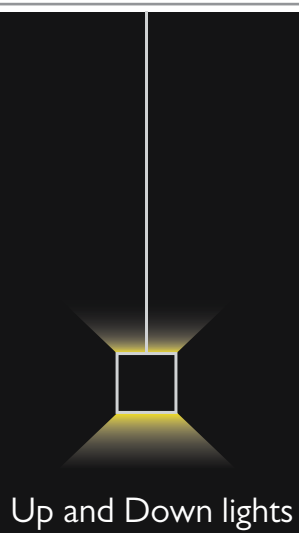


5 **YEAR**
WARRANTY*

LED LINEAR LIGHTS

*Suitable for 10-12 hours daily, usage of the product for 24 hours a day would void warranty

www.v-tac.eu | www.vtacexports.com



LED LINEAR LIGHTS



LINKABLE
Up to 12 Meters Together



0-10V
DIMMABLE

LINEAR HANGING LIGHTS

Discover V-TAC's reliable 40w suspended linear lights with a staggering lifespan of 30,000 hours. Designed with excellent heat dissipation. Perfect replacement for traditional and inefficient linear lighting fixtures with the efficient LED provided by Samsung. Linear lights are offered in three colors variants Black, Silver and White.

- **30,000 hrs Lifespan**
- **UGR<19**
- **Linkable with connectors**
- **Aluminum Body**
- **0-10V Dimmable**
- **1.5 Meter Wire Length**

5 YEAR
WARRANTY*

SILVER **VT-7-43-S**

SKU:384 | 4000K DAY WHITE

WHITE **VT-7-43-W**

SKU:383 | 4000K DAY WHITE

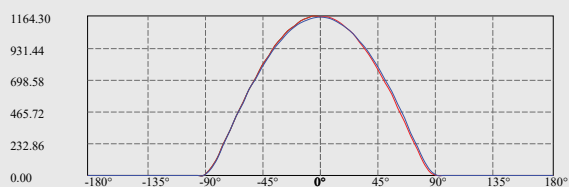
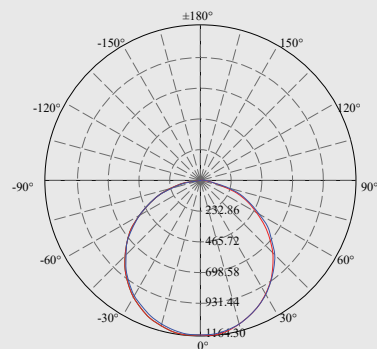


WATTS	LUMENS	SIZE
40w	3400	1200x50x75mm

LED LINEAR LIGHTS

*Suitable for 10-12 hours daily, usage of the product for 24 hours a day would void warranty

www.v-tac.eu | www.vtacexports.com



C180(Max): —
C0/C180: —
C90/C270: —
Field angle(10%Imax):C0/180Left:81.0 Right:78.8
:C90/270Left:80.7 Right:80.0
Beam Angle(50%Imax):C0/180Left:57.8 Right:55.7
:C90/270Left:57.6 Right:56.8



LED LINEAR LIGHTS



LINKABLE
UP TO 12 METERS TOGETHER

LED RECESSED LINEAR

Our new range of linear lights are also available for recessed installation, complete with necessary accessories for a seamless & continuous lighting system. Perfect replacement for traditional and inefficient linear lighting fixtures with the efficient LED provided by Samsung. Linear lights are offered in two colors variants Silver and White.

SILVER VT-7-41-S

SKU:380 | 4000K DAY WHITE
SKU:603 | 6000K WHITE

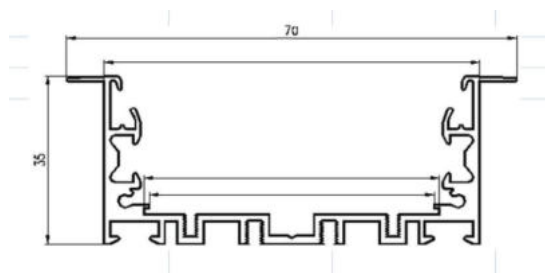
WHITE VT-7-41-W

SKU:381 | 4000K DAY WHITE
SKU:604 | 6000K WHITE

WATTS	LUMENS	SIZE
40w	3200	1211x70x35mm

- **30,000 hrs Lifespan**
- **AC:200-240V,50/60Hz**
- **Linkable with connectors**
- **Aluminum Body**

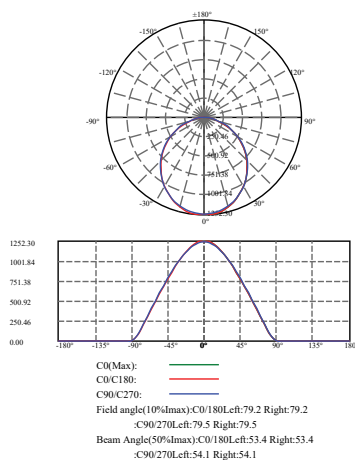
5 YEAR
WARRANTY*



LED LINEAR LIGHTS

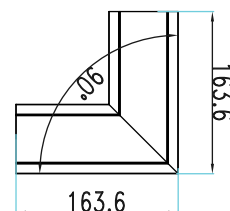
*Suitable for 10-12 hours daily, usage of the product for 24 hours a day would void warranty

www.v-tac.eu | www.vtacexports.com



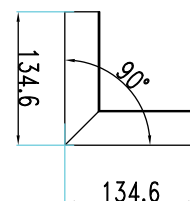
8W
VT-7-41-L

SILVER: SKU:386 | 4000K DAY WHITE
WHITE: SKU:385 | 4000K DAY WHITE



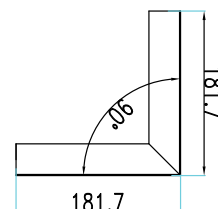
10W
VT-7-41-LN

SILVER: SKU:388 | 4000K DAY WHITE
WHITE: SKU:387 | 4000K DAY WHITE



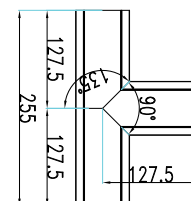
12W
VT-7-41-LW

SILVER: SKU:390 | 4000K DAY WHITE
WHITE: SKU:389 | 4000K DAY WHITE



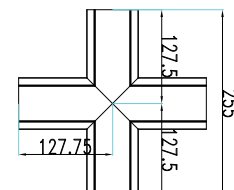
14W
VT-7-41-T

SILVER: SKU:392 | 4000K DAY WHITE
WHITE: SKU:391 | 4000K DAY WHITE



16W
VT-7-41-X

SILVER: SKU:394 | 4000K DAY WHITE
WHITE: SKU:393 | 4000K DAY WHITE





LINKABLE

UP TO 12 METERS TOGETHER

LED RECESSED LINEAR

Our new range of linear lights are also available for recessed installation, complete with necessary accessories for a seamless & continuous lighting system. Perfect replacement for traditional and inefficient linear lighting fixtures with the efficient LED provided by Samsung.

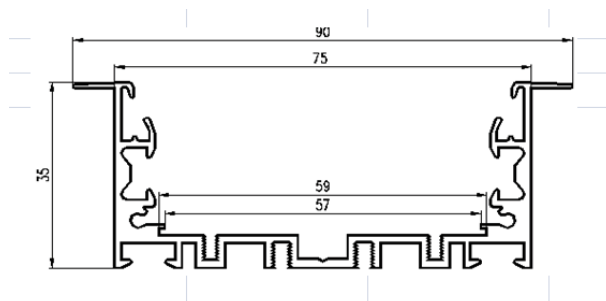
- **30,000 hrs Lifespan**
- **AC:200-240V,50/60Hz**
- **Linkable with connectors**
- **Aluminum Body**

5 YEAR
WARRANTY*

WHITE VT-7-42-W

SKU:382 | 4000K DAY WHITE

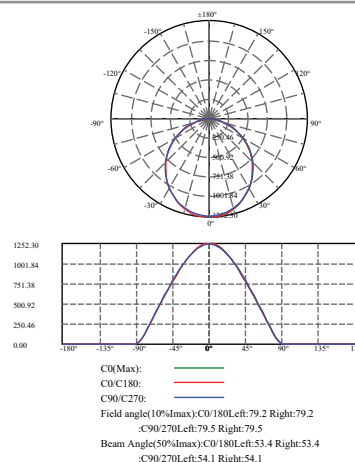
WATTS	LUMENS	SIZE
40w	4000	1211x90x35mm



LED LINEAR LIGHTS

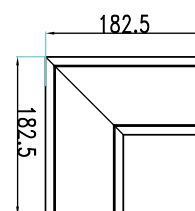
*Suitable for 10-12 hours daily, usage of the product for 24 hours a day would void warranty

www.v-tac.eu | www.vtacexports.com



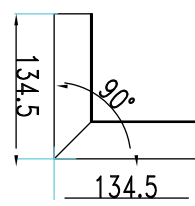
10W
VT-7-42-L

: SKU:395 | 4000K DAY WHITE



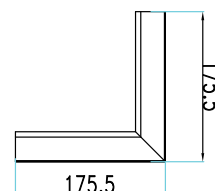
10W
VT-7-42-LN

: SKU:396 | 4000K DAY WHITE



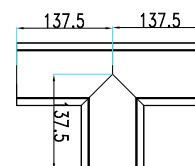
12W
VT-7-42-LW

: SKU:397 | 4000K DAY WHITE



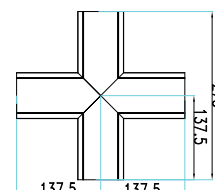
14W
VT-7-42-T

: SKU:398 | 4000K DAY WHITE



16W
VT-7-42-X

: SKU:399 | 4000K DAY WHITE





LED LINEAR LIGHTS

V-TAC's new Linear Trunking Light is a set of highly efficient, continuous linear light fixtures with a staggering 160 lm/w rating & a plug-and-play system. It provides an efficient, linkable modular system which means that each unit can be easily connected to the Linear Master Trunking through L, T, and X node connectors. 90°, 120°, and double asymmetric lenses are available for maximum adaptability on any space. Perfect suspended lighting for supermarkets, warehouse, service centers, and gymnasiums. No warm-up time, instant start-up. Sustained color temperature throughout long periods of usage.

High lumen output

output: 160 lm/W to meet different requirements

V-TAC PERFORMANCE
160
LUMENS/WATT

Flexible Beam angle

90°, 120°, double-asymmetric



Modular system

Continuous row system, seamless connection, max 3500W /row



LED LINEAR LIGHTS



V-TAC PERFORMANCE
160
LUMENS/WATT

PRO series

MODEL	WATTS	CRI	LUMENS	PF	SIZE
VT-4551D	50w	>80	8000	>0.9	1500mm

LINEAR MASTER TRUNKING

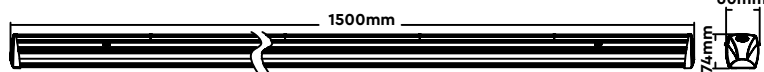
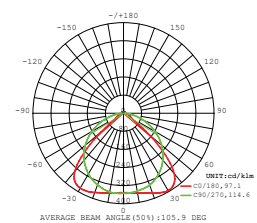
SKU: 1360 | 4000K DAY WHITE



90° LENS



DIMMABLE



LINEAR MASTER TRUNKING

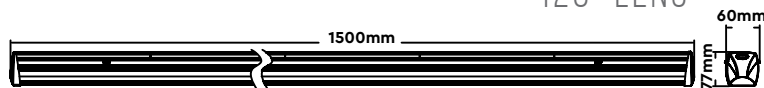
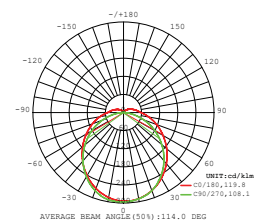
SKU: 1361 | 4000K DAY WHITE



120° LENS



DIMMABLE



LINEAR MASTER TRUNKING

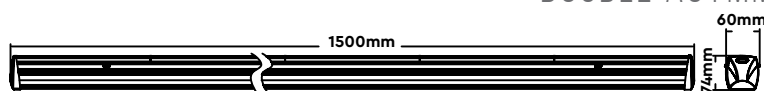
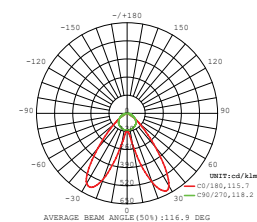
SKU: 1362 | 4000K DAY WHITE



DOUBLE ASYMMETRIC LENS



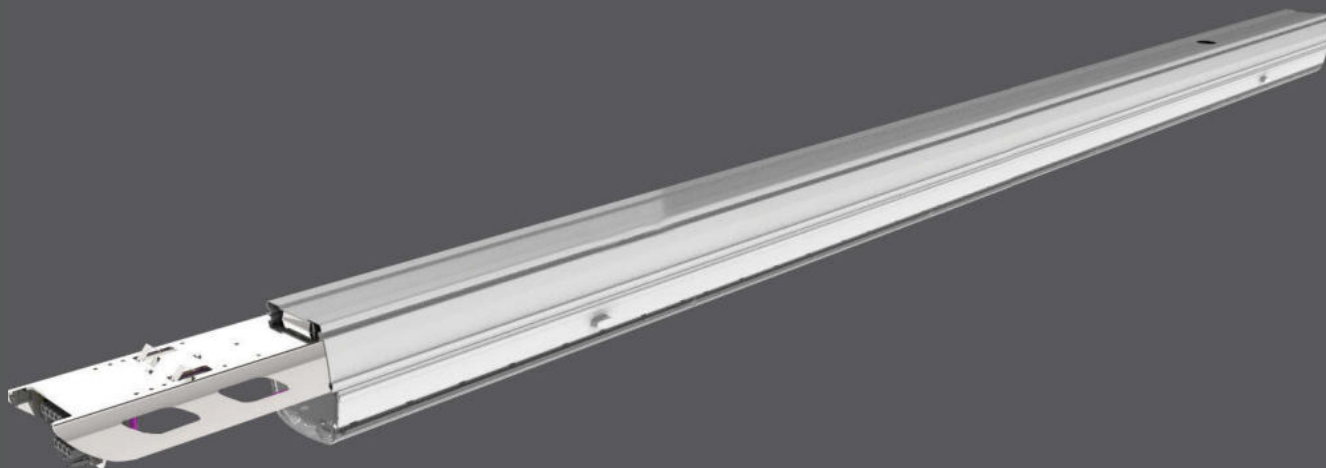
DIMMABLE



LED LINEAR LIGHTS

www.v-tac.eu | www.vtacexports.com

*Suitable for 10-12 hours daily, usage of the product for 24 hours a day would void warranty



MODEL	WATTS	CRI	LUMENS	PF	SIZE
VT-4550D	50w	>80	8000	>0.9	1500mm

LINEAR FOLLOW TRUNKING

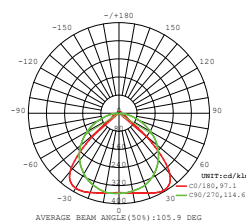
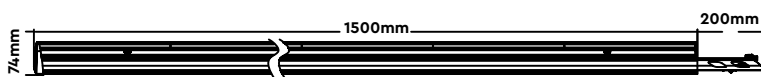
SKU: 1363 | 4000K DAY WHITE



90° LENS



DIMMABLE



LINEAR FOLLOW TRUNKING

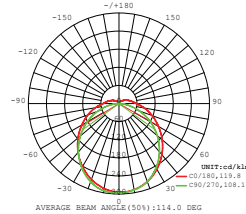
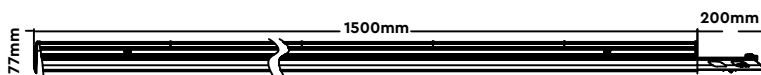
SKU: 1364 | 4000K DAY WHITE



120° LENS



DIMMABLE



LINEAR FOLLOW TRUNKING

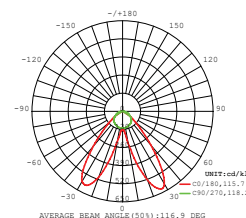
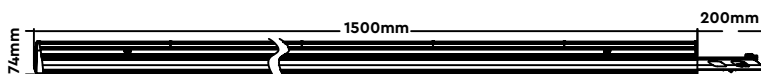
SKU: 1365 | 4000K DAY WHITE



DOUBLE ASYMMETRIC LENS



DIMMABLE



LED LINEAR LIGHTS

*Suitable for 10-12 hours daily, usage of the product for 24 hours a day would void warranty

www.v-tac.eu | www.vtacexports.com

ACCESSORIES FOR LINEAR TRUNKING



LINEAR TRACK MODULE

SKU : 1382



END CAP-LINEAR LIGHT ACCESSORY

SKU : 1366



SUSPENDED CORD-LINEAR LIGHT ACCESSORY

SKU : 1367



8 WIRE-FEED IN MALE CONNECTOR-LINEAR

SKU : 1368



L NODE CONNECTOR-LINEAR ACCESSORY

SKU : 1383



T NODE CONNECTOR-LINEAR ACCESSORY

SKU : 1384



X NODE CONNECTOR-LINEAR ACCESSORY

SKU : 1385



S LINE-FOLLOW TRUNKING RAIL

SKU : 1451



S LINE-PC BLANK COVER

SKU : 1452

LED LINEAR LIGHTS

