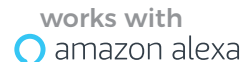


INSTALLATION INSTRUCTION

WIFI RGB CONTROLLER

TECHNICAL DATA

Working Temperature	-20 to +60°C
Input Voltage	DC12-24V
Output	3 Channels
Connection Mode	Common anode
Static Power Consumption	<0.5W
Output current	<4A(each circuit)
Output power	12V:<144W, 24V:<288W



INTRODUCTION & WARRANTY

2

YEARS
WARRANTY*

Thank you for selecting and buying V-TAC product. V-TAC will serve you the best. Please read these instructions carefully before starting the installing and keep this manual handy for future reference. If you have any another query, please contact our dealer or local vendor from whom you have purchased the product. They are trained and ready to serve you at the best. The warranty is valid for 2 years from the date of purchase. The warranty does not apply to damage caused by incorrect installation or abnormal wear and tear. The company gives no warranty against damage to any surface due to incorrect removal and installation of the product. The products are suitable for 10-12 Hours Daily operation. Usage of product for 24 Hours a day would void the warranty. This product is warranted for manufacturing defects only.

WARNING

1. Please make sure to turn off the power before starting the installation.
2. Installation must be performed by a certified person.



This marking indicates that this product should not be disposed of with other household wastes.



Caution, risk of electric shock.

PRODUCT FEATURES

1. Support for 16 million kinds of color and Brightness adjustment control
2. Channel:RGB
- 3.Support for color and dynamic mode Customization and preservation
- 4.Group synchronization control function
- 5.The switch time, static ,and dynamic display of the light can be set
- 6.Lights and music sync functions
- 7.A variety of built-in dynamic model, and the custom dynamic model
- 8.Remote control function
- 9.The microphone sound control function
- 10.The camera takes the background color and the setting of the scene



16Million Colors



Built-in dynamic mode



Sound control microphone



Light dancing with music



Sync control by Group



Custom mode



Timing mode

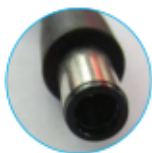


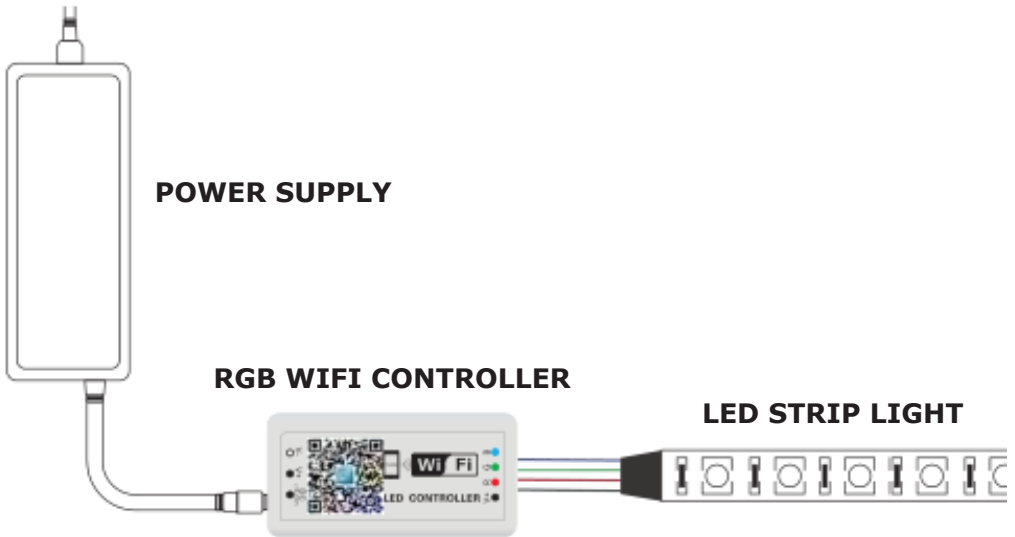
Remote control by internet



Connect the amazon Alexa

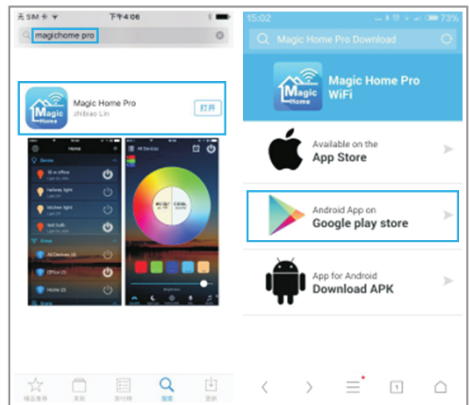
THE RIGHT WAY TO CONNECT





APP INSTALLATION

1. Product software APP name: Magic Home Pro a. Apple users can search "Magic Home Pro" in "APP Store"; Android users can search "Magic Home Pro" in "Google Play Store" or from browsers. The APP is free to download and use.



b. Scan the QR code below to download and install the APP for free. (Please click "open the web link from the browser" when you use Wechat to scan the QR for the Wechat itself has no browser function.)



Scan the QR code to download the APP

USAGE DESCRIPTION

1. Please use this product in a dry environment
2. Please use the voltage for dc current of dc9-28v, and not to use 220V alternating current.
3. The product is a common anode connection. After installed the WIFI controller, open mobile WIFI network signal, find "LED net*****" signal and connect, open the Magic Home Pro APP, there are three kinds of connection mode to connect the controller.

The first: choose to connect directly to the controller ;enter the APP control interface.

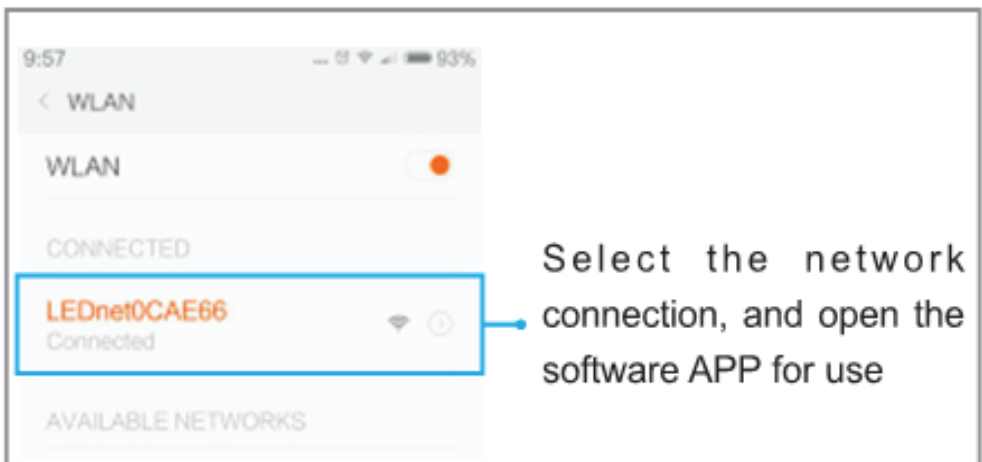
The second: choose to connect to the router, write the router password , mobile phone choose the to connect the router network signal, open the Magic Home Pro APP, enter the software APP control interface

The third: choose to connect the router and keep the router in a network connection, remote control can be performed

ANDROID OPERATING INTERFACE INSTRUCTIONS

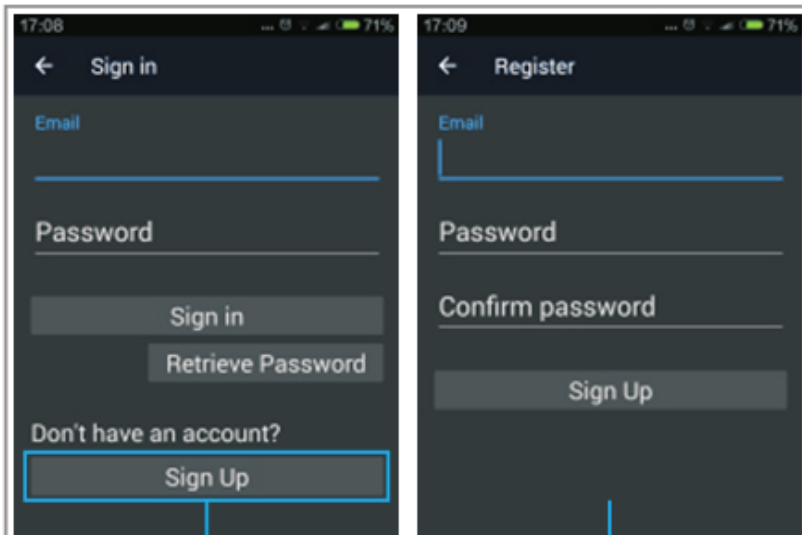
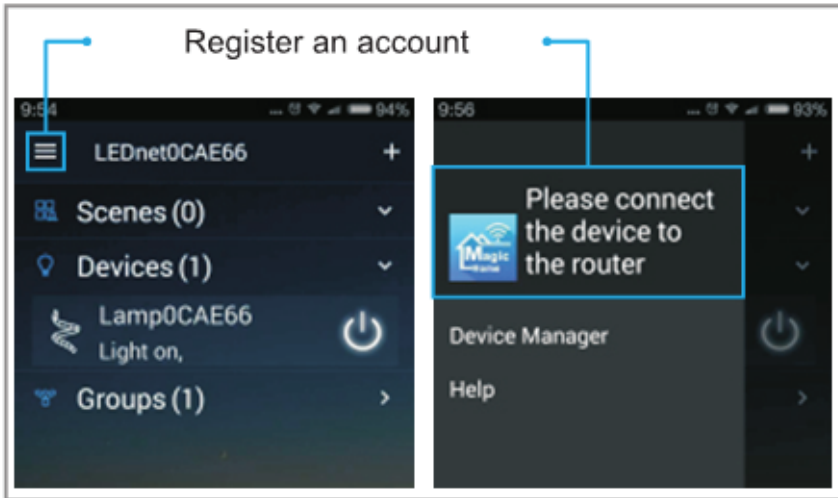
In the use of the APP, please make sure that the controller circuit and power supply is normal connection.

1. Single connection: do not need to register account, open cell phone WIFI network, find "LED net**" signal and connect.

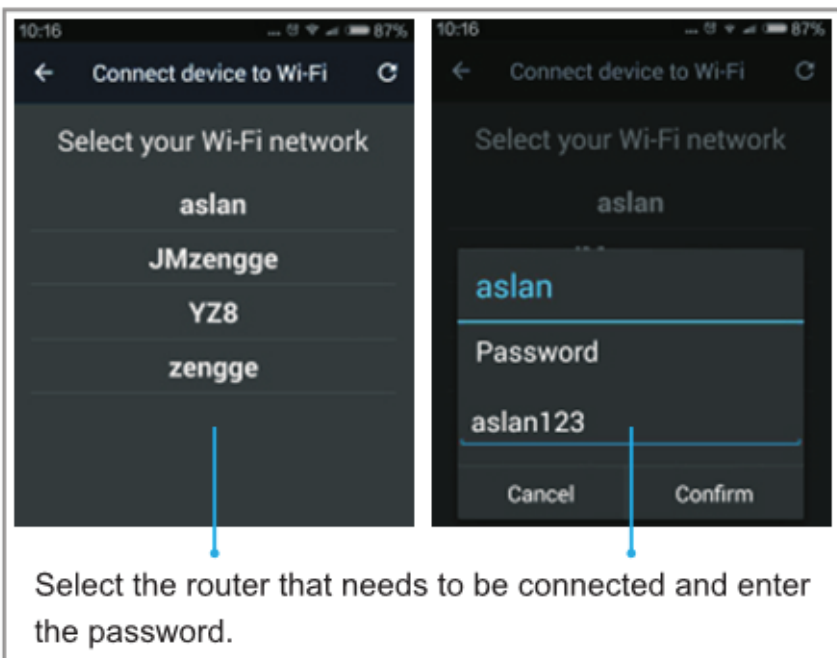
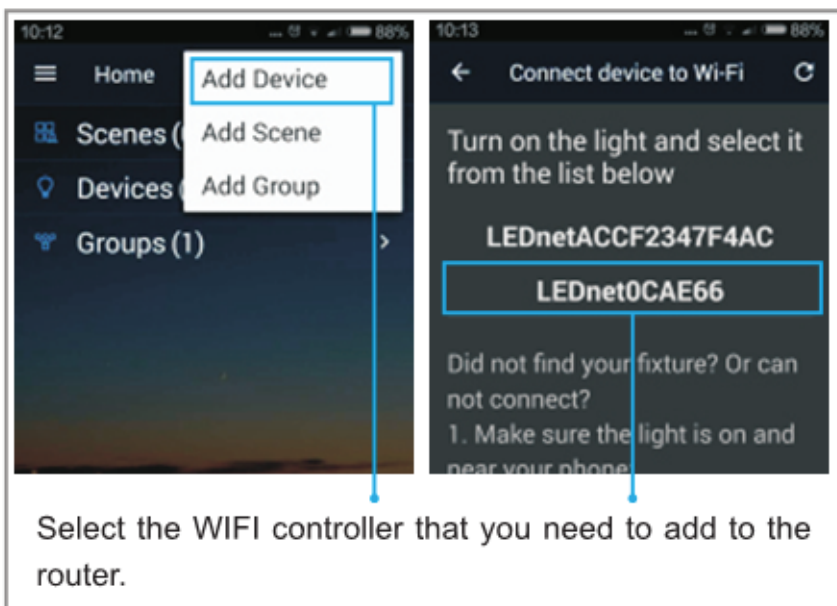


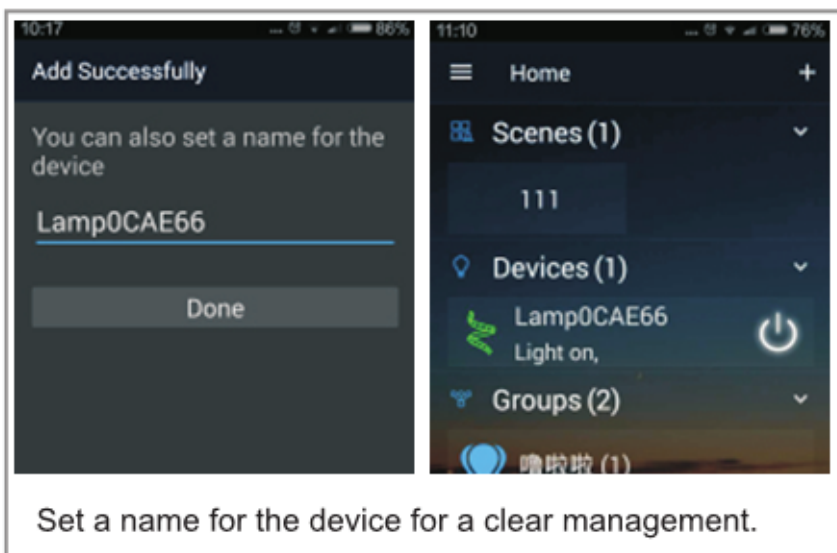
2. Add the controller's signal to the router for connection control.

When registering the account ,please connect the controller's WIFI signal to the router (make sure the network is accessible)



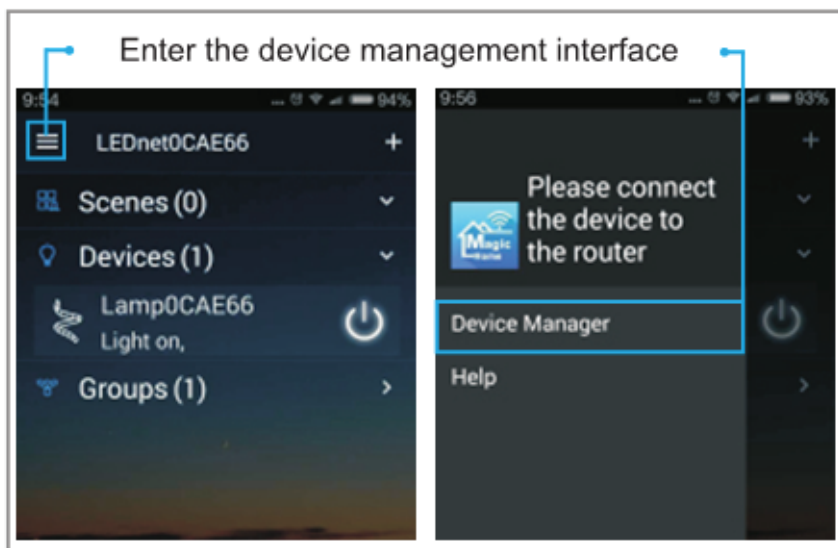
If you have a account and password, you can choose to login directly, if not, you can choose to register your new account.

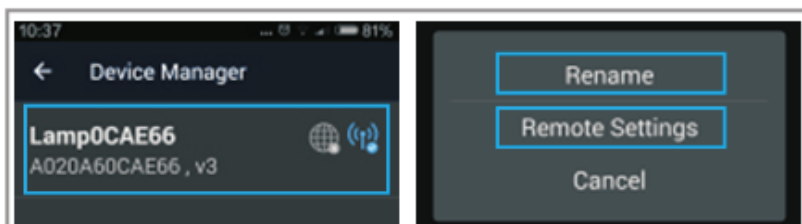




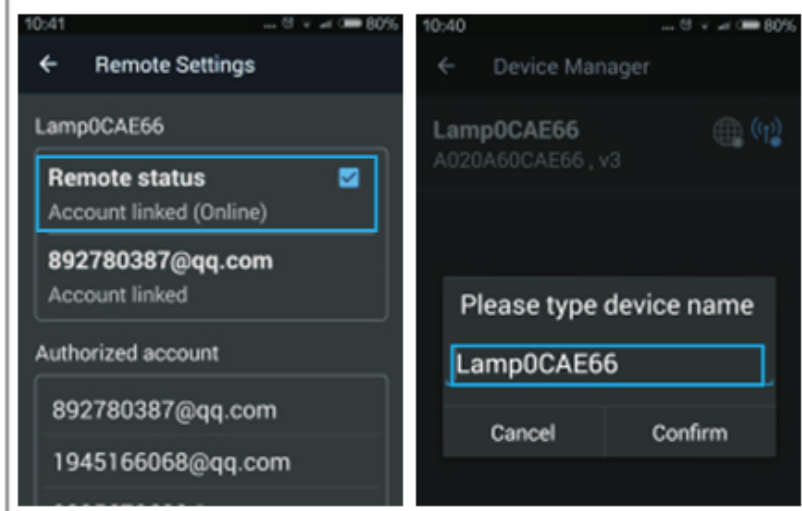
3. Remote connection settings

When making remote Settings, make sure the account is logged in properly



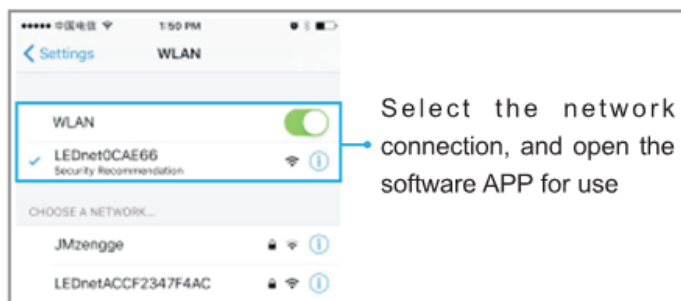


Select the router network to modify the name and turn on the remote



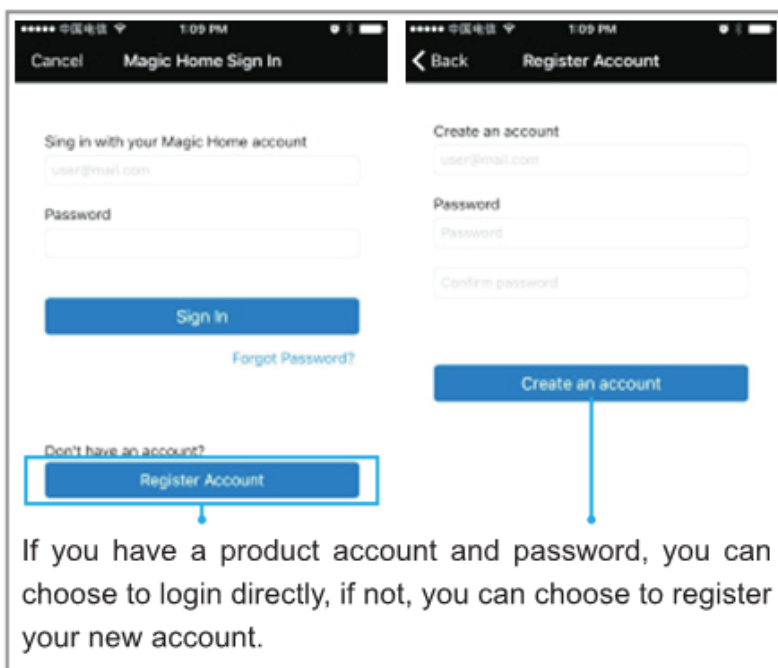
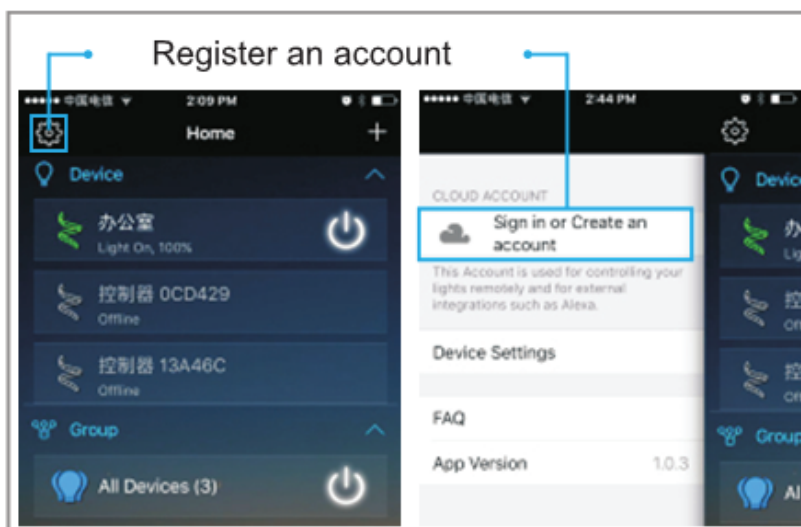
The apple operating interface instructions: In the use of the APP, please make sure that the controller circuit and power supply is normal connection

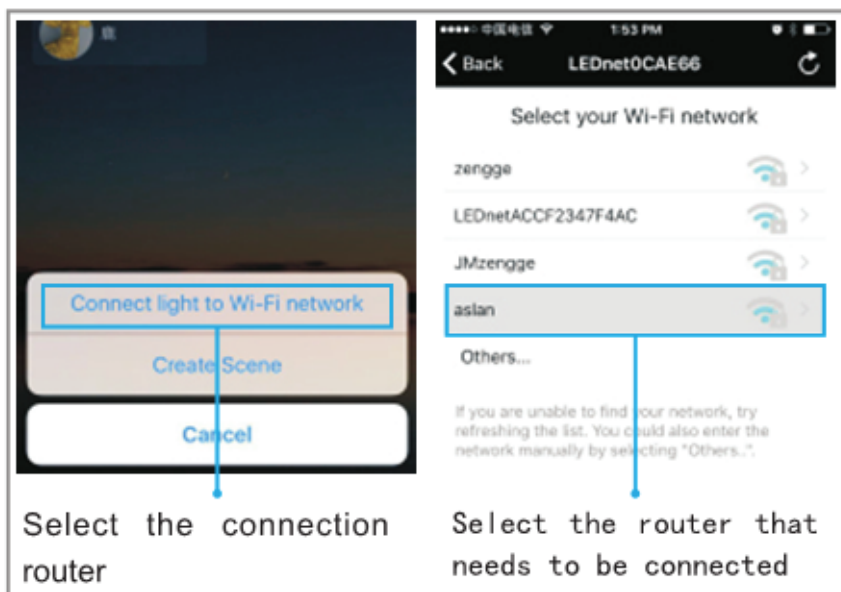
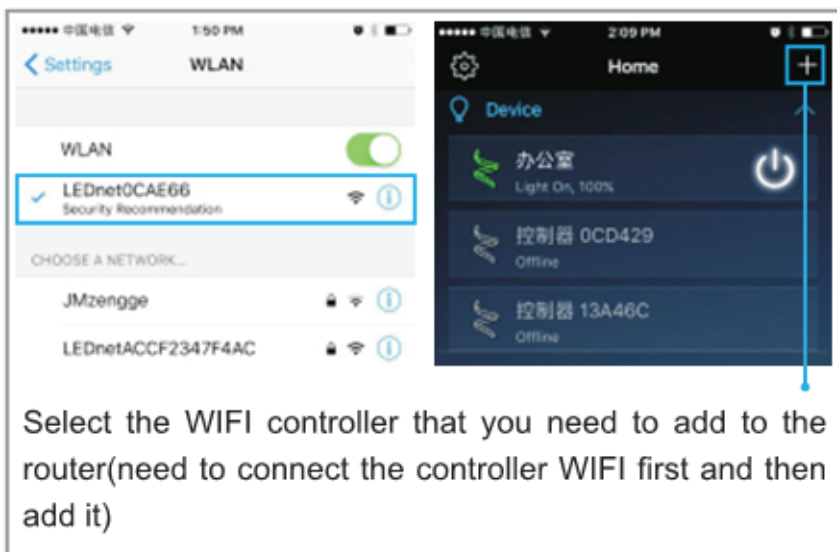
1. Single connection: do not need to register account, open cell phone WIFI network, find "LED net..." signal and connect.

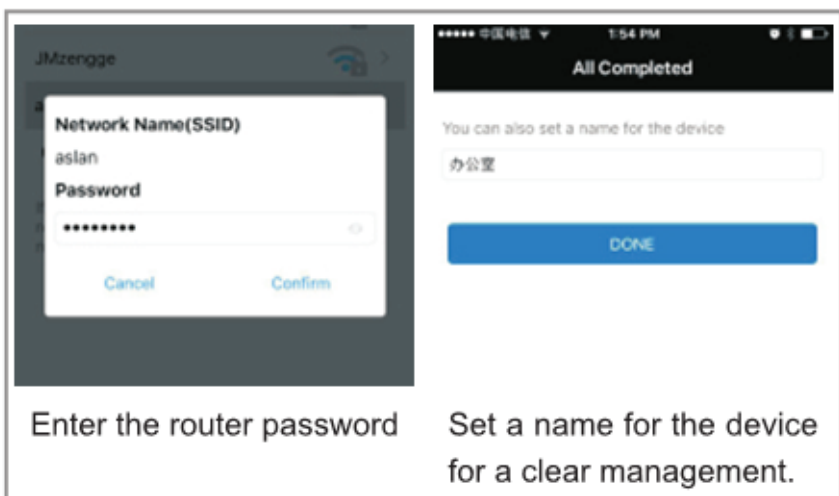


2. Add the controller's signal to the router for connection control.

When registering the account, please connect the controller's WIFI signal to the router (make sure the network is accessible)



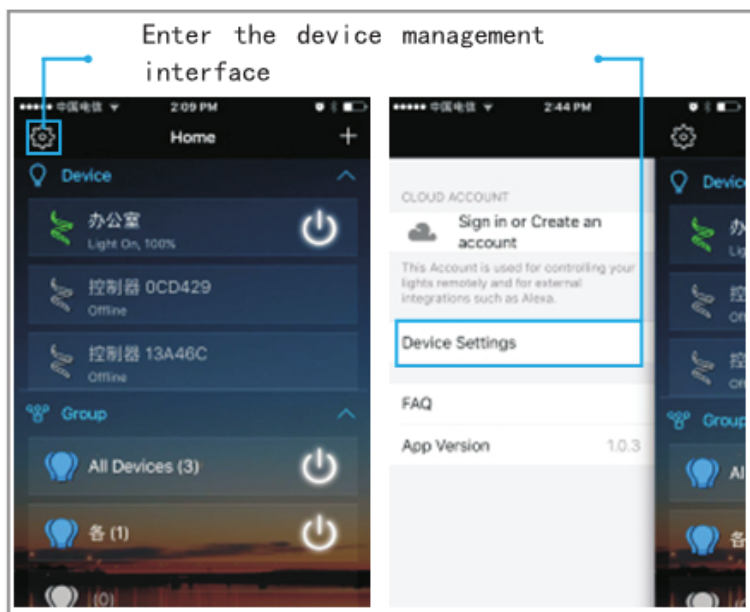


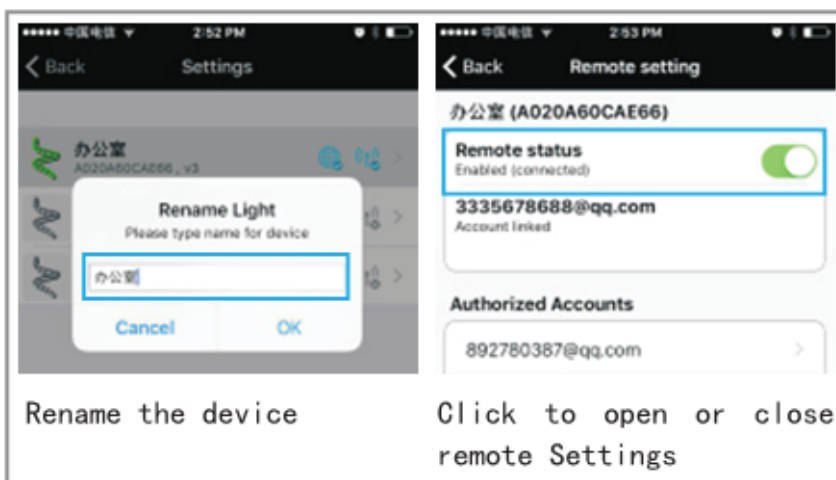
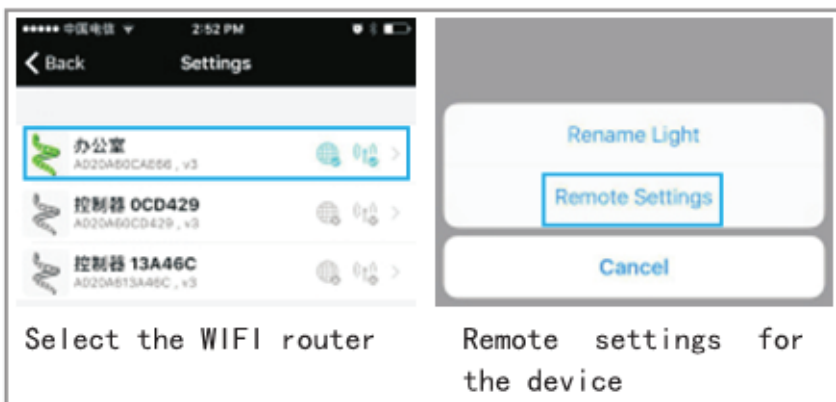


Note: if you want to add controller WIFI to the router network in the APP interface, you should connect the controller signal in network connection first.

3.Remote connection settings.

When making remote settings, make sure the account is logged in properly

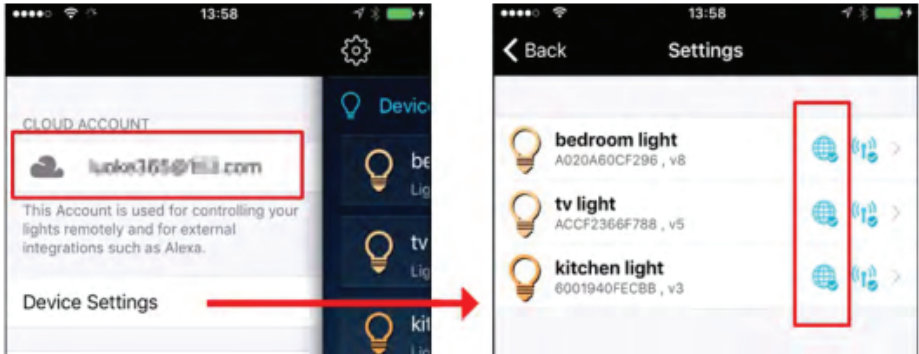




ALEXA SETTINGS

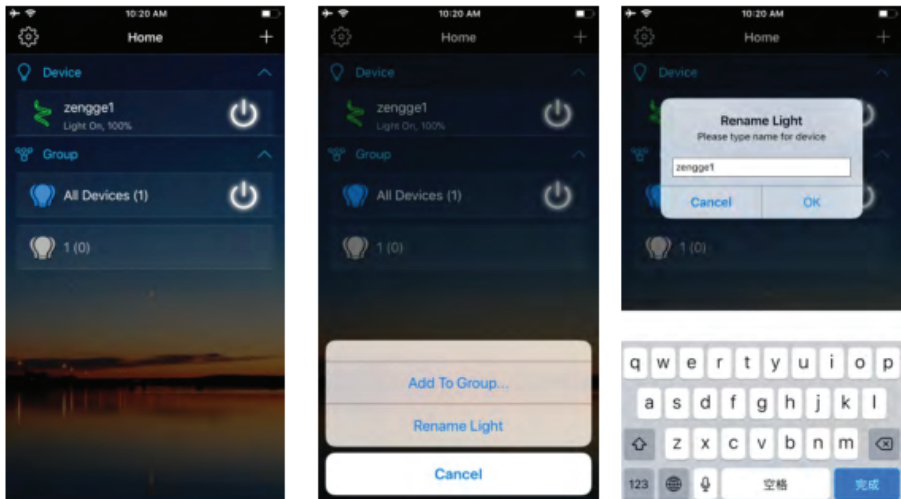
Step 1: Create your Magic Home cloud account

In order to control your smart light with the Amazon Echo or control them remotely, you need to create a MagicHome cloud account and sign in.



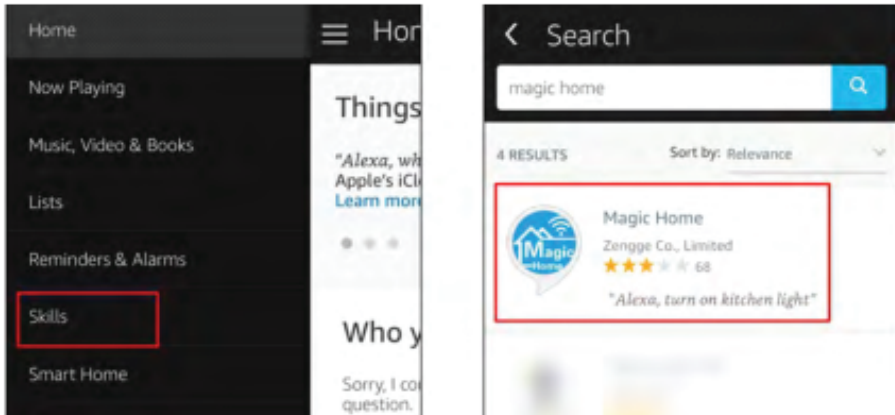
Step 2: Add your light and modify the name

Make sure there is at least one smart light in device list, and enable your lights for remote control. On "Home" page, long press light to rename.



Step 3: Enable Alexa Skill

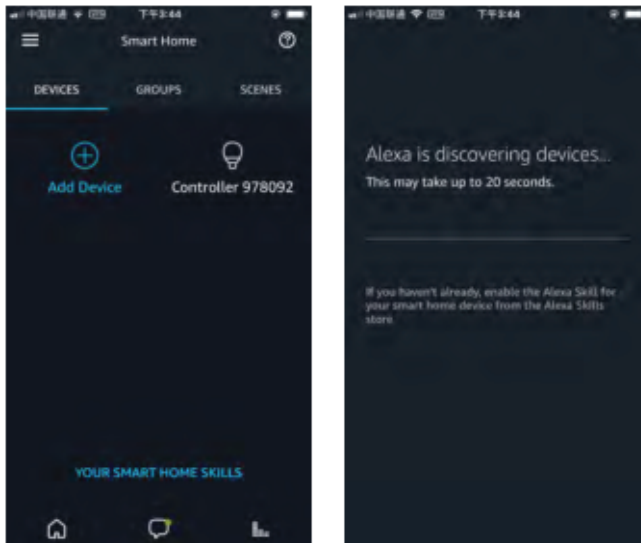
The next step is to download the Amazon Alexa app , open the Amazon Alexa app and under the skills section, search for the Magic Home skill. The account and password must be same as you created in Magic Home Pro APP



Step 4: Login and Discover Devices

Use your MagicHome cloud account you created in step 1 to sign in to "Magic Home" Skill.The next step is to discover your smart lights from Alexa app. You can say Alexa, discover devices

Once Alexa has completed discovering your smart lights, they will be shown in the Smart Home section in Alexa app.



Step 5: Control your light

Here, you finish all setups. You can now control your lights by issuing voice commands. Supported Commands:

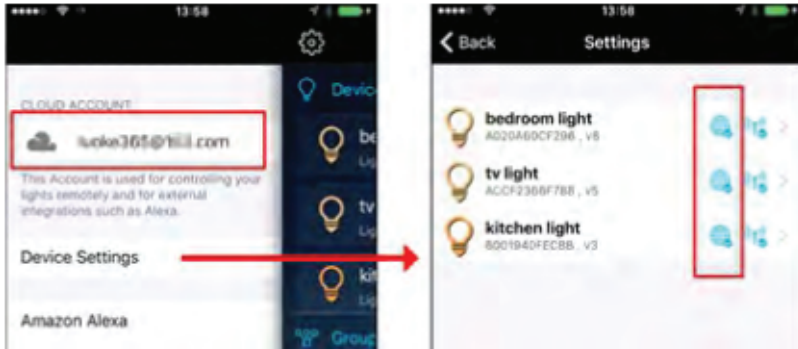
These are some of the currently supported Alexa voice commands for the smart light. Alexa, set [light name] to [0-100]% Alexa, turn [light name] on/off Alexa, dim/brighten [light name]

- Alexa, increase/decrease [light name] Alexa, set the [light name] light to red
- Alexa, change the [light name] to the color blue Alexa, make the [light name] warm white
- Alexa, change the [light name] to the cool white Alexa, set the [light name] to daylight changing colors on your lights
- Color Options for Alexa control of your smart device:
Blue Orange Crimson Pink Cyan Purple Fuchsia Red
Gold Salmon Green Sky Blue Lavender Teal
Lime Turquoise Magenta Violet Yellow

GOOGLE SETTING

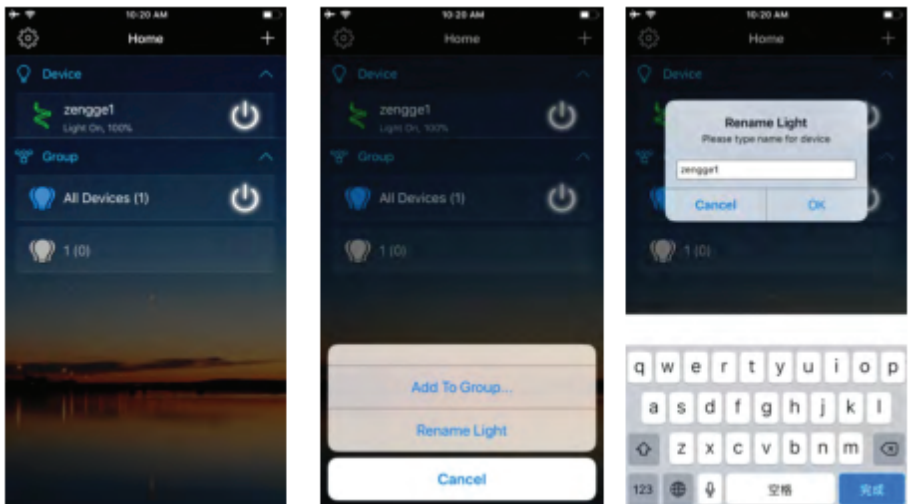
Step 1: Create your Magic Home cloud account

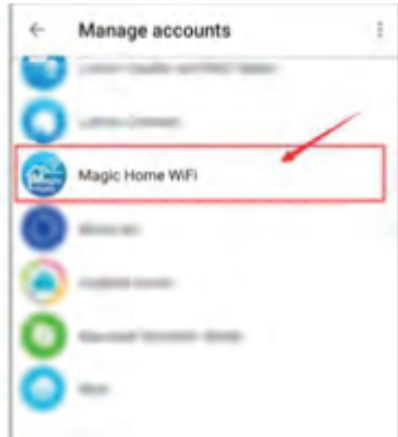
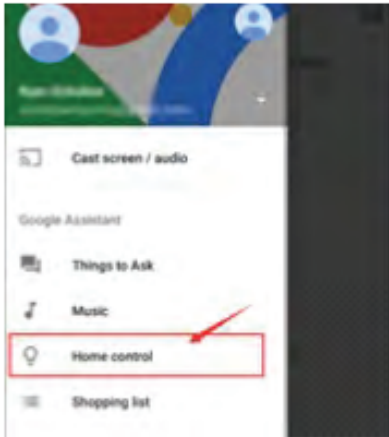
In order to control your smart light with the Amazon Echo or control them remotely, you need to create a MagicHome cloud account and sign in.



Step 2: Add your light and modify the name

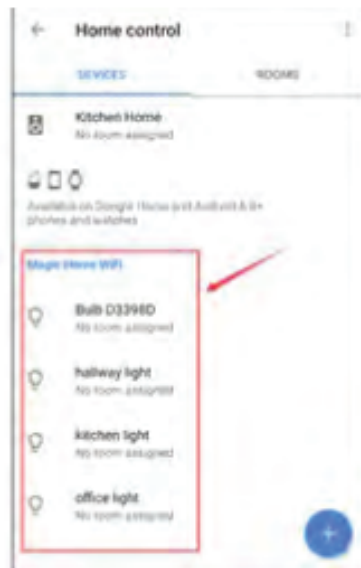
Make sure there is at least one smart light in device list, and enable your lights for remote control. On "Home" page, long press light to rename.





Step4: Login with your app account

Enter your app account and password to finish the account linking. (Use the Magic Homecloud account you used on step 1). Your lights will be listed on Home Control interface.



Step 5: Control your light

Here, you finish all setups. You can now control your lights by issuing voice commands.-

Supported Commands:

Say "Ok Google" or "Hey Google", then...Turn on <light name>Dim <light name>

Brighten <light name>Set <light name> to [50%]

Dim/Brighten <light name> by [50%]Turn <light name> [color]Turn on/off all the lights Is <light name> on?

Changing colors on your lights

Color Options for Google Home control of your smart device:

Blue Orange Crimson Purple Cyan Red Fuchsia Salmon Gold Sky Blue Green Teal
Lavender Turquoise Lime Violet Magenta Yellow

REMOTE CONTROL

1. We have maintained long -term cooperation with the US Ali Cloud Terminal in USA server to provide our customers with better remote control services.
2. When and only when you register and login your account in Magic Home Pro APP,No matter where you are, you still can control your home light with APP as long as there 's WiFi/2G/3G/4G internet for your smart phone.
- 3.Note:After the controller is bound to home WIFI, it will not display on your WIFI list anymore.

COMMON PROBLEM ANALYSIS

1. Why can't my smart phone find the Wi-Fi signal of controller?

Please check if the controller has been connected with router or not, at the same time the Wi-Fi function of phone works properly.

2. Why can't the controller connect with router?

Firstly, please ensure to input the correct Wi-Fi password.

If the password is correct and the controller still fails to connect with router,please shutdown the controller and router, then turn on the router and the controller 30 seconds later. And wait for 2 minutes before you start the APP.

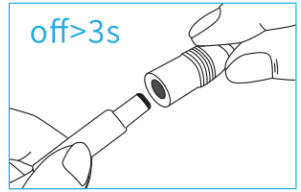
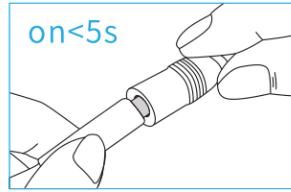
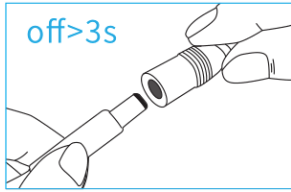
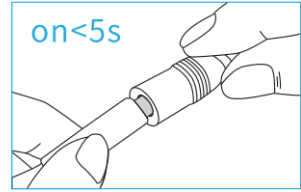
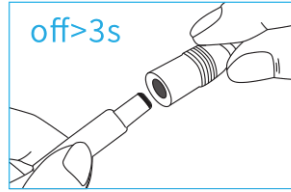
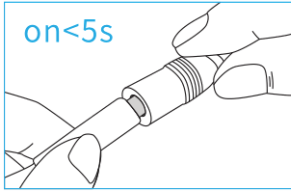
If the problem cannot solved after the above operations, please restore factory defaults.

3. Why doesn't the controller show in the APP after choose the Wi-Fi signal of the Controller in the phone setting?

Please refresh the APP device list by sliding down on the screen. If still not find the controller, please try to shutdown the function of smart Internet selection of your smart phone settings. This is to avoid automatically exit the controller signal connection because of the unavailable network.

I. How to reset the controller?

Reset the WiFi controller by plug and unplug connector repeatedly for 4 times, wait for 1-3seconds each time you plug/unplug the connector. (Please refer to the diagram in APP HELPS for more details)



CAUTIONS

- 1, This products Input voltage is DC12-24V, other input voltage are not allowed.
- 2, Lead wire should be connected correctly, according to the wire color and the connecting diagram offers.
- 3, Overload are prohibited.

In case of any query/issue with the product, please reach out to us at: support@v-tac.eu
For More products range, inquiry please contact our distributor or nearest dealers. V-TAC
EUROPE LTD. Bulgaria, Plovdiv 4000, bul.L.Karavelow 9B